



Cylinder Gas Best Price High Purity China Supply Kr Gas Krypton

Our Product Introduction

for more products please visit us on gascylindertank.com

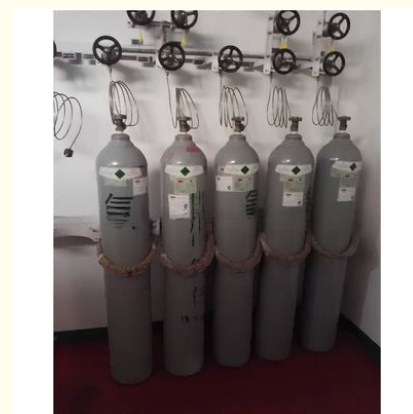
Basic Information

- Place of Origin: China
- Brand Name: CMC
- Certification: COA
- Model Number: Kr
- Minimum Order Quantity: 1kg
- Price: US \$ 1/kg
- Packaging Details: Cylinder/Tank
- Delivery Time: 15 days
- Payment Terms: L/C, T/T
- Supply Ability: 10000tons/year



Product Specification

- Product Name: Krypton
- Purity: 99.999%
- Transport: By Sea
- Grade: Electronic Grade
- Model No.: Krypton
- Transport Package: 40L/47L/50L
- Specification: 40L/47L/50L
- Trademark: CMC
- Origin: China
- HS Code: 28042900
- Supply Ability: 5000
- CAS No.: 7439-90-9
- Formula: Kr
- EINECS: 231-098-5
- Constituent: Industrial Pure Air



More Images



Product Description

Product Description

Krypton is a chemical element with the symbol Kr and atomic number 36. Here are some key points about krypton:

Chemical Symbol: Kr

Atomic Number: 36

Atomic Weight: 83.798 atomic mass units

State at Room Temperature: Krypton is a colorless, odorless, and tasteless gas. It belongs to the group of noble gases in the periodic table.

Noble Gas: Like other noble gases, krypton is chemically inert and does not readily react with other elements. It has a full outer electron shell, making it stable and unreactive under normal conditions.

Occurrence: Krypton is a relatively rare element in the Earth's atmosphere, making up about 1 part per million by volume. It is obtained as a byproduct of the separation of air and natural gas.

Uses: Krypton has several applications in various industries. It is used in lighting, particularly in fluorescent lamps and certain types of high-intensity discharge lamps. Krypton-filled incandescent bulbs can produce a whiter light compared to standard incandescent bulbs. Krypton is also used in lasers for scientific and industrial purposes.

Cryogenic Applications: Due to its low boiling point (-153.22°C or -243.8°F), krypton is used in cryogenic applications. It is used as a filling gas in double-pane windows to improve insulation and reduce heat transfer. Krypton is also used in certain types of cryogenic refrigeration systems.

Nuclear Applications: Krypton-85, a radioactive isotope of krypton, is produced during nuclear fission and is used in various applications. It is used to detect leaks in sealed systems, as a tracer in environmental studies, and in some medical imaging techniques.

Krypton Compounds: Krypton is generally considered to be chemically inert and does not readily form compounds under normal conditions. However, some krypton compounds have been synthesized in laboratory settings, such as krypton difluoride (KrF₂) and krypton hexafluoride (KrF₆).

Overview

Basic Info.

DOT Class	2.1	Un No	1056
Cylinde	GB/ISO/DOT	Cylinder Pressure	15MPa/20MPa
Valve	Cga580	Melting Point	-156.6 °C
Appearance	Colorless, Odorless	Boiling Point	-153.3 °C
Density	3.376 Kg/m³	Molecular Weight	4.0026
Transport Package	40L/47L/50L	Specification	100.00%
Trademark	CMC	Origin	China
HS Code	28042900	Production Capacity	5000 M3/Year

Product Description



Krypton is concentrated in the atmosphere, occupying 1.1ppm in the atmosphere. Krypton is chemically inert under all normal conditions

Specification	Company Standard
Kr	≥ 99.999%
O ₂	≤ 0.5 ppm
N ₂	≤ 2.0 ppm
Moisture	≤ 0.5 ppm
Ar	≤ 2.0 ppm
CO ₂	≤ 0.5 ppm
Xe	≤ 2.0 ppm
CF ₄	≤ 0.5 ppm
H ₂	≤ 0.5 ppm

PRODUCT DETAILS



PRODUCT LINE



Company

Profile

Shanghai Kemike Chemical Co., Ltd is staffed by trained personnel, combine many years experience in Gas industry .We supply cylinder gas, electronic gas, etc ., and the gas holder, panel, valves and fittings and other equipment, parts and engineering services to our customers in China and worldwide; The products are involved in various industrial fields, such as semiconductor chip, solar cell, LED, TFT-LCD, optical fiber, glass, laser, medicine , etc.,. Our mission is to partner with our global customers to provide support, solutions and quality products that are innovative, reliable, and safe. Our products mainly include: H₂, O₂, N₂, Ar, CO₂, propane, acetylene, helium, laser mixed gas, SiH₄, SiH₂Cl₂, SiHCl₃, SiCl₄, NH₃, CF₄, NF₃, SF₆, HCL, N₂O, doping mixed gas (TMB, PH₃, B₂H₆) and other electronic gases.

PRODUCTION PROCESS

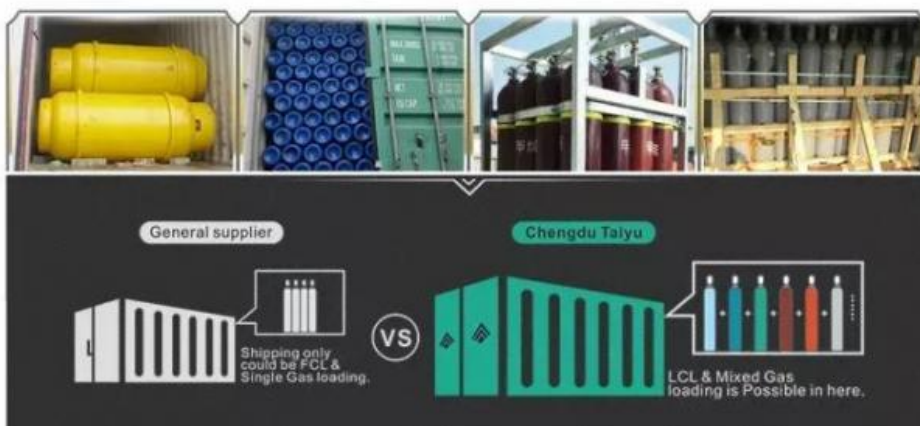


Factory display



Packaging &
Shipping

PACKING & SHIPPING



 **Shanghai Kemike Chemical Co.,Ltd**

 +86 18762990415

 williamchen@cmc-chemical.com

 gascylindertank.com